



THE HOUSING TRUST

# Senior Cohousing Community ElderGrace



## **New Senior Cohousing Community!**

Come visit ElderGrace, our resident-designed cooperative neighborhood. Individual households clustered around a Common House with shared facilities such as a community kitchen, dining room, meeting rooms, laundry, guest accommodations, gardens, and orchard. Units available for persons 55 and over who enjoy cooperative living and shared activities.

Prices start below \$192,500 for a one bedroom unit excluding upgrades. Ask us about many affordability options available to Santa Fe residents!

**PHONE: 505.989.3960**

FAX: 505.982.3690

E-MAIL: [SWELSH@HOUSINGTRUSTONLINE.ORG](mailto:SWELSH@HOUSINGTRUSTONLINE.ORG)

- 970 to 1242 Sq. Feet
- One- & Two-Bedroom Units
- Ceramic Tile Throughout
- Energy Efficient Buildings
- Passive Solar Orientation
- In-floor Radiant Heat
- Energy Star Appliances
- Healthy Indoor Air Quality
- Water Saving Fixtures
- Community Gardens
- Rainwater Harvesting
- Easy Walk to Arroyo Chamisos Trail



# Senior Cohousing Community ElderGrace

PRICE LIST - Void after JULY 31, 2009

Address	Unit #	Heated Square Feet	Type	Basic Prices*	
3466 Cerrillos Road	H-2	1	1242	2BD/2BA	<i>Under Contract</i>
3466 Cerrillos Road	H-1	2	1088	2BD/1BA	207,500.00
3466 Cerrillos Road	A-2	3	1088	2BD/1BA	207,500.00
3466 Cerrillos Road	A-1	4	1088	2BD/1BA	<i>Under Contract</i>
3466 Cerrillos Road	B-1	5	1088	2BD/1BA	Santa Fe Homes Program Prices**
3466 Cerrillos Road	B-2	6	1088	2BD/1BA	<i>Under Contract</i>
3466 Cerrillos Road	I-1	7	1088	2BD/1BA	<i>Under Contract</i>
3466 Cerrillos Road	I-2	8	1088	2BD/1BA	207,500.00
3466 Cerrillos Road	J-2	9	1242	2BD/2BA	227,500.00
3466 Cerrillos Road	J-1	10	970	1BD/1BA	Santa Fe Homes Program Prices**
3466 Cerrillos Road	C-2	11	970	1BD/1BA	Santa Fe Homes Program Prices**
3466 Cerrillos Road	C-1	12	1242	2BD/2BA	<i>Under Contract</i>
3466 Cerrillos Road	D-1	13	1088	2BD/1BA	207,500.00
3466 Cerrillos Road	D-2	14	1088	2BD/1BA	<i>Under Contract</i>
3466 Cerrillos Road	K-1	15	970	1BD/1BA	192,500.00
3466 Cerrillos Road	K-2	16	970	1BD/1BA	Santa Fe Homes Program Prices**
3466 Cerrillos Road	L-2	17	970	1BD/1BA	<i>Under Contract</i>
3466 Cerrillos Road	L-1	18	970	1BD/1BA	192,500.00
3466 Cerrillos Road	M-2	19	1242	2BD/2BA	227,500.00
3466 Cerrillos Road	M-1	20	970	1BD/1BA	<i>Under Contract</i>
3466 Cerrillos Road	F-2	21	1242	2BD/2BA	227,500.00
3466 Cerrillos Road	F-1	22	1088	2BD/1BA	207,500.00
3466 Cerrillos Road	G-1	23	970	1BD/1BA	<i>Under Contract</i>
3466 Cerrillos Road	G-2	24	1088	2BD/1BA	<i>Under Contract</i>
3466 Cerrillos Road	N-1	25	1242	2BD/2BA	227,500.00
3466 Cerrillos Road	N-2	26	1088	2BD/1BA	Santa Fe Homes Program Prices**
3466 Cerrillos Road	O-2	27	1242	2BD/2BA	<i>Under Contract</i>
3466 Cerrillos Road	O-1	28	1242	2BD/2BA	<i>Under Contract</i>

Contact Housing Trust at 505-989-3960 for current pricing if this list expires

HOA Fees: 1 bedroom: \$122.79, 2 bedroom 1 bath: \$134.90, 2 bedroom/2 bath: \$150.58

\* Discounts of \$5000 to \$7000 available to qualifying buyers under Low Price Dwelling Unit Ordinance. Price excludes upgrades.

\*\* Santa Fe Homes Program: Prices differ by income tier of buyer in accordance with city ordinance ranging from \$85000 to \$155,000 in accordance with applicable regulations and restrictions and verification by the Housing Trust



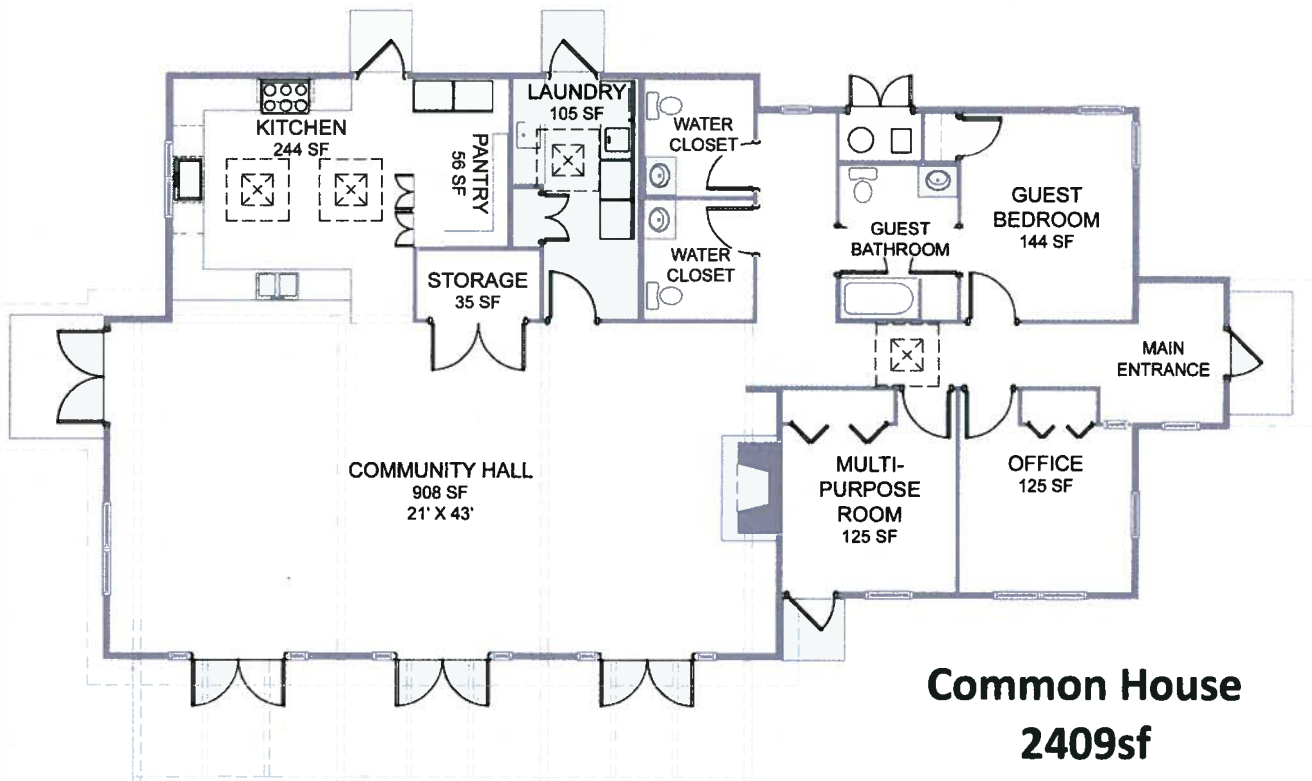
PHONE: 505.989.3960

FAX: 505.982.3690

E-MAIL: SWELSH@HOUSINGTRUSTONLINE.ORG



# Senior Cohousing Community ElderGrace



**PHONE: 505.989.3960**

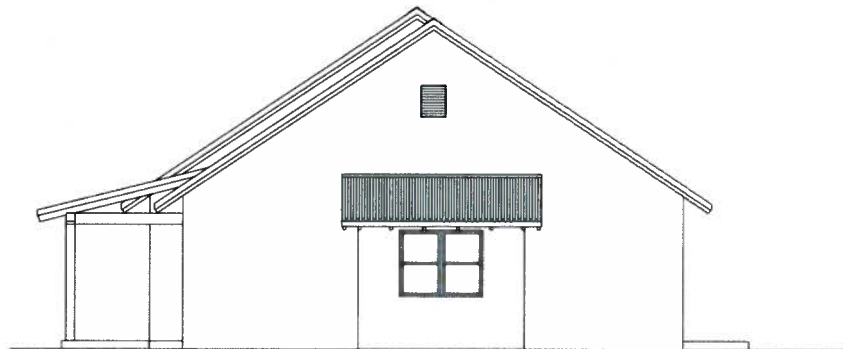
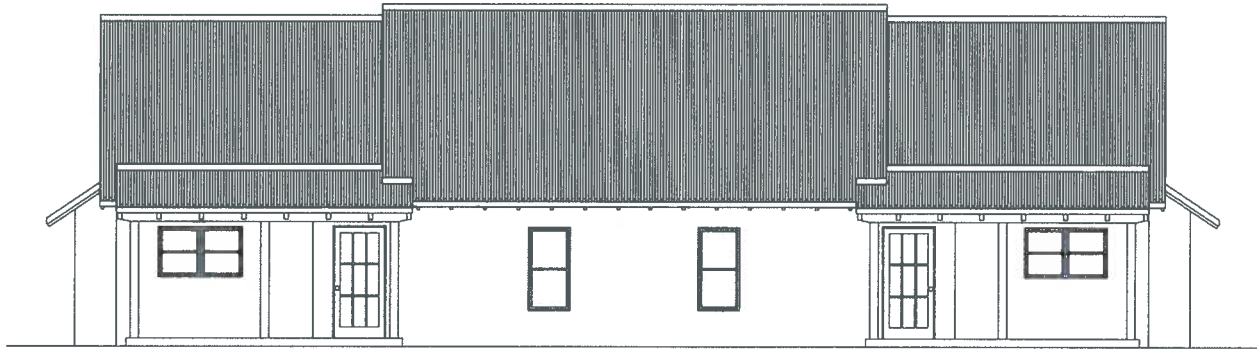
FAX: 505.982.3690

E-MAIL: [SWELSH@HOUSINGTRUSTONLINE.ORG](mailto:SWELSH@HOUSINGTRUSTONLINE.ORG)



# Senior Cohousing Community ElderGrace

## Unit Elevations



**PHONE: 505.989.3960**

FAX: 505.982.3690

E-MAIL: [SWELSH@HOUSINGTRUSTONLINE.ORG](mailto:SWELSH@HOUSINGTRUSTONLINE.ORG)



# Senior Cohousing Community ElderGrace

## Common House Amenities

### Community Hall:

- Passive solar design
- Cathedral ceilings
- Wood-burning stone fireplace
- Large storage room
- Open portal & dining terrace

### Community Kitchen:

- Food preparation sink
- Dish washing sink with pre-rinse unit
- Two dishwashers
- Semi-pro stove/oven
- Large Pantry
- Skylights

### Community Laundry:

- Two Washer/Dryer Hook-ups
- Rinsing sink
- Folding counter
- Skylight

### Guest Facilities:

- Guest bedroom for two
- Guest bathroom with tile tub/shower

## Unit Amenities

- Universal design
- Water saving fixtures
- Passive solar orientation
- In-floor radiant heat;
- Healthy indoor air quality
- Tile floors throughout
- Large attic storage space
- Cozy dining nook
- Energy star ceiling fans
- 30% more energy efficient
- Energy efficient light fixtures
- Energy star certified exhaust fans & appliances
- Low-e windows
- Blown-in cellulose insulation
- PV ready hook-ups at roof
- Portal or trellis at entrance
- Washer and dryer hook-ups

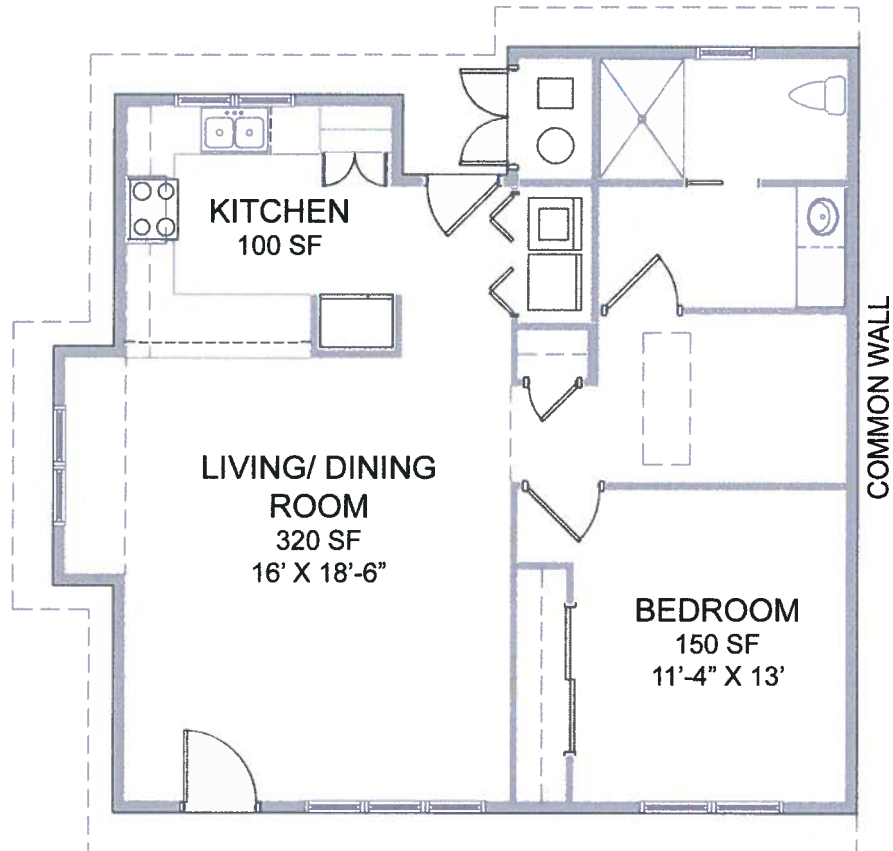
**PHONE: 505.989.3960**

FAX: 505.982.3690

E-MAIL: [SWELSH@HOUSINGTRUSTONLINE.ORG](mailto:SWELSH@HOUSINGTRUSTONLINE.ORG)



# Senior Cohousing Community ElderGrace



## One Bedroom / One Bath Unit ( 970 Square Feet)

Note: All units have one portal, either on the south or north side, depending on the units orientation on the site.

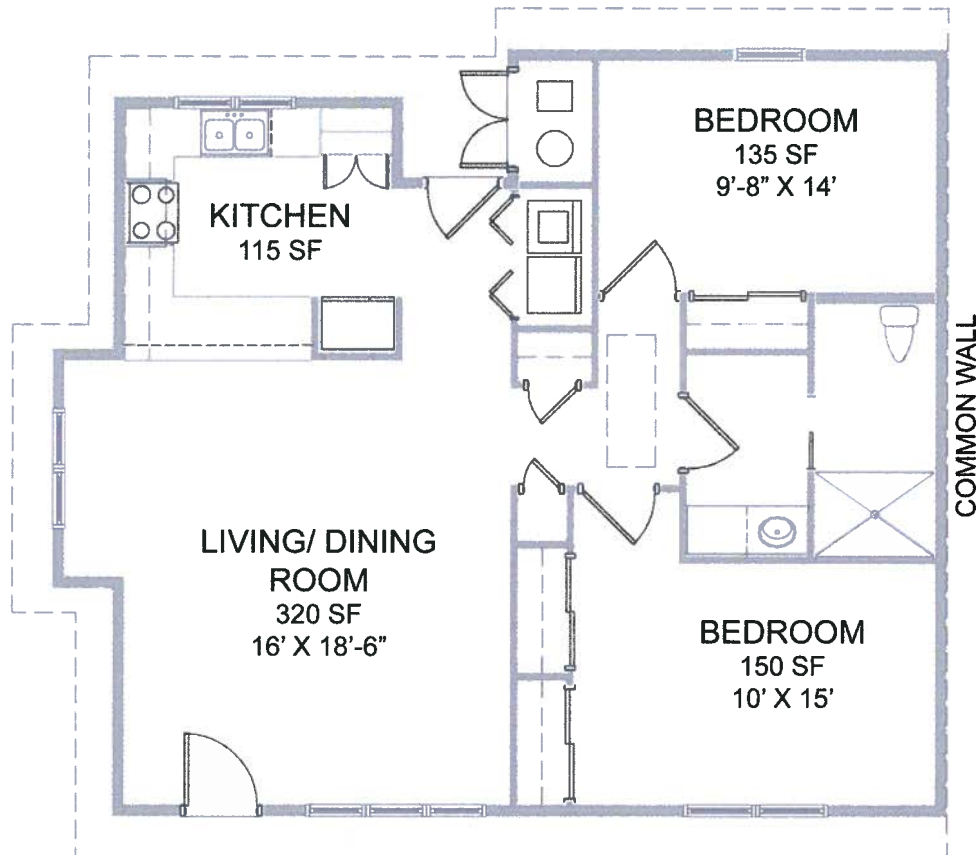
**PHONE: 505.989.3960**

FAX: 505.982.3690

E-MAIL: SWELSH@HOUSINGTRUSTONLINE.ORG



# Senior Cohousing Community ElderGrace



## Two Bedroom / One Bath Unit ( 1088 Square Feet)

Note: All units have one portal, either on the south or north side, depending on the units orientation on the site.

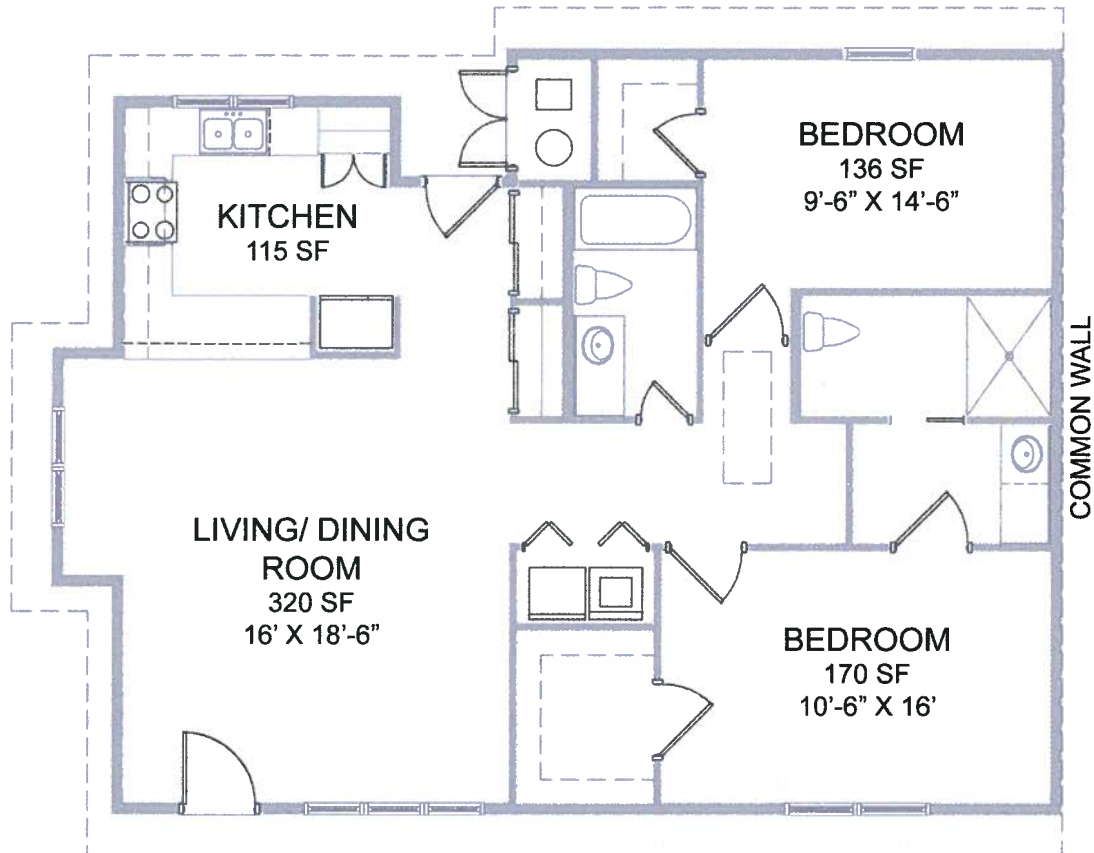
**PHONE: 505.989.3960**

FAX: 505.982.3690

E-MAIL: SWELSH@HOUSINGTRUSTONLINE.ORG



# Senior Cohousing Community ElderGrace



## Two Bedroom / Two Bath Unit ( 1242 Square Feet)

Note: All units have one portal, either on the south or north side, depending on the units orientation on the site.

**PHONE: 505.989.3960**

FAX: 505.982.3690

E-MAIL: SWELSH@HOUSINGTRUSTONLINE.ORG